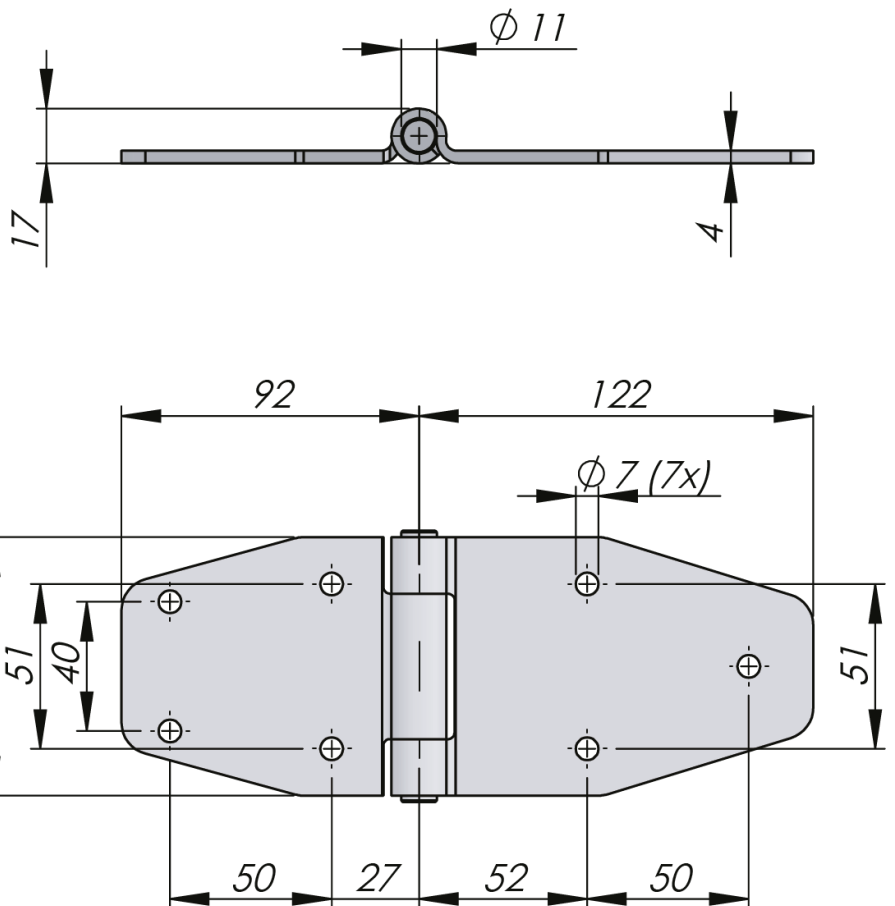


Heavy-duty rolled hinge for mounting with screws or rivets. Ideal for vehicles. The hinge-leaves are folded, allowing a flat surface mounting. Opening angle 180°. The hinge pin is fixed.



Standards: DIN EN 61373

Industrials
When access counts

| P/N | Material |
|-----------|--------------------|
| 322183-01 | Steel, zinc plated |